

LYFE – LYMPHOMA FORUM OF EXCELLENCE

# “What’s new in lymphoid neoplasias?”

The next LyFE course will take place in Bellinzona on 24-26 January 2025, starting mid-morning of Friday 24 January 2025

Since 2004 the Oncology Institute of Southern Switzerland (IOSI) and the Foundation for the Institute for Oncology Research (IOR) organize a yearly course dedicated to lymphoid neoplasias, including myelomas. The program of the course, designed by lymphoma specialists, gives the participants the possibility to gain in-depth and updated knowledge in this complex field. A particular feature of the course is the fact that each participant has the possibility to present a clinical case, which is consequently discussed by a panel of experts. The limited number of attendees and the familiar environment contribute to create a constructive interaction between the faculty and the participants, which allows ample discussions and exchange of experience and expertise.

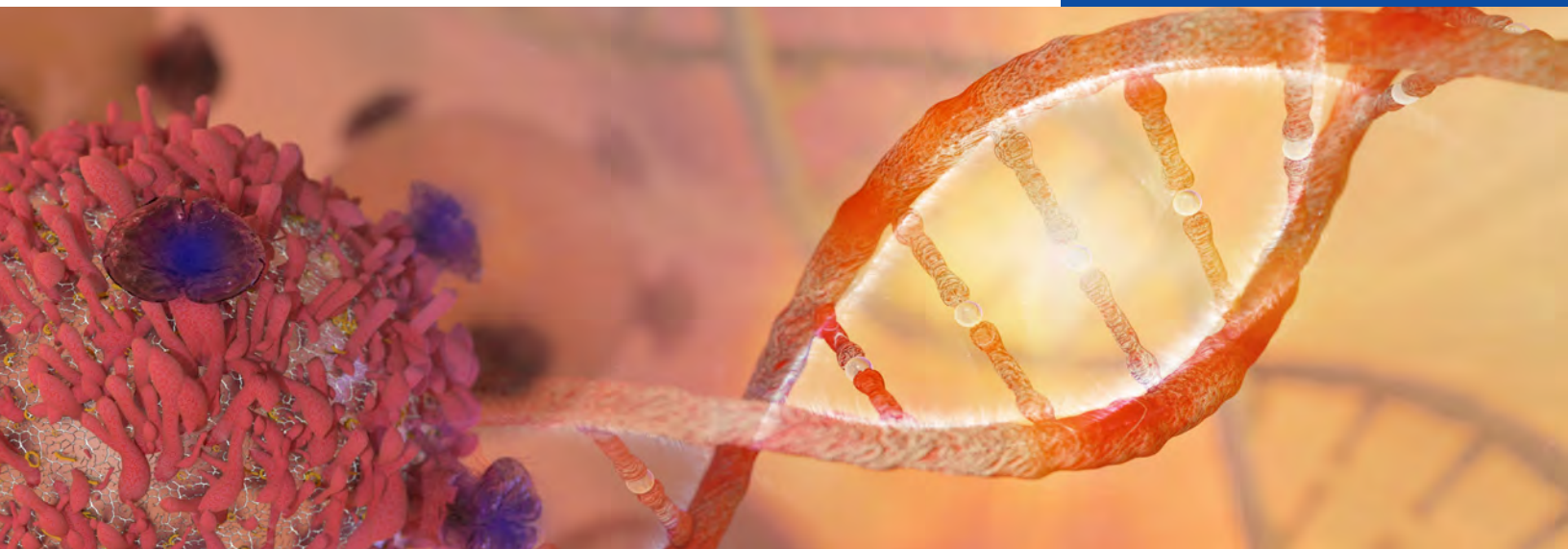
The registration fee of CHF 100 includes access to the event, accommodation, transfers from hotel to venue, lunches and coffee breaks.

Registration does not cover travelling expenses and dinners.

**Registration**

**deadline:**

**10 December 2024**



The LyFE course is accredited by the European Accreditation Council for Continuing Medical Education (EACCME)

Accepted participants: *on a first-come/first-served basis*

For information:

LyFE Secretariat  
Foundation for the Institute of Oncology Research (IOR)  
6500 Bellinzona, Switzerland

+41 (0)58 666 73 00  
info@lymphomaforum.ch  
www.lymphomaforum.ch

The course is supported by Educational Grants.

